



# SCAPES

Laura de Santillana  
Alessandro Diaz de Santillana

April 7, 2012 - April 2013

A Traveling Exhibition Organized  
by Museum of Glass  
Tacoma, Washington, USA



MUSEUM OF GLASS

The one without color appears  
by the manifold application of his power  
with many colors in his hidden purpose.  
May the Being of splendor in whom the world dissolves  
and from whom it rises  
grant us a clear understanding.  
He is Agni, the lord-of-fire,  
and he is the Sun, and the Wind, and Moon.  
He is the Seed, the Immense-Being,  
He is the Lord-of-Progeny.

*Svetasvatar Upanisad* 4.1-4 [1]



Scapes is a gloriously colorful, dynamic, and entirely new body of work imagined and executed by Laura de Santillana and Alessandro Diaz de Santillana. The siblings share an impressive pedigree in glass. They are the grandchildren of Paolo Venini (1895–1959), founder of Venini, the glassworks company in Murano, Italy and the children of Ludovico Diaz de Santillana, director of Venini from 1959 to 1984. In addition to a venerable family history anchored in the traditions of glassmaking, both Laura and Alessandro are respected artists in the international Studio Glass movement and have enjoyed successful solo careers. Scapes is all the more fascinating not only because it represents their first artistic collaboration, but also their conjoined interpretation of Hindu cosmology. The exhibition comprises four installations or rooms, based on the Hindu mythology or belief that the world is a series of disks made up of wind, water and golden earth



Photos by Russell Johnson





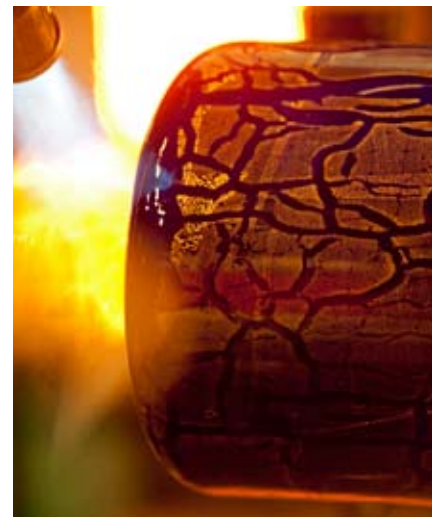
upon which float four continents in a vast circular ocean. The De Santillanas have interpreted elements of this cosmology in glass, creating spaces in which forms and colors correspond to physical phenomenon or the visible universe, and evoke an atmosphere of cosmic vibration. Each installation is defined by a limited but strikingly vibrant, color palette. Black, smoky gray, and shades of yellow, gold and deep red define the Earth room. Space is conceptualized in varying degrees of white. Silver, burnt gold, white, copper, indigo and black delineate the Sun installation, while the Constellations are white and gold. Each room is entered through a symbolic gate and includes a combination of both







artists' work. Alessandro Diaz de Santillana's work is distinctive; his 30 glass paintings were created from large color-saturated cylinders, vibrant compositions, that were slumped and framed. Laura de Santillana's work is equally striking. Her elegantly sculptured forms, displayed singularly and in small groupings, represent lingas (complex symbols of Hinduism), mountains, celestial eggs, and stars. All of the work for Scapes was produced entirely in the Hot Shop at the Museum of Glass, where the artists merged time-honored traditions of Italian glassmaking with the organic



fluidity of the American Studio Glass movement. The practice of extending generous residencies through its Visiting Artist Residency Program to create work specifically for new exhibitions has become a hallmark of the Museum of Glass. It has proved to be a popular and enriching experience for visitors and artists alike. The de Santillanas' work was produced over the course of two lengthened residencies in February and September of 2010. The exhibition will be accompanied by a full-color, hard back, 128-page catalog







published by the University of Washington Press. Essayists include Dr. Balkrishna Doshi, an architect of international standing and founder of the Vastu-Shilpa Foundation for Studies and Research in Environmental Design; David Landau, collector and art scholar; and Francesco Da Rin De Lorenzo, a renowned architect who has close ties to the Venini de Santillana family and scholarly interest in glass as both an architectural and artistic material.

The publication will include a DVD documenting the creation of the work in the Hot Shop as well as the completed installations.



## LAURA DE SANTILLANA



Laura de Santillana was born in Venice and studied at the School of the Visual Arts in New York. Ms. de Santillana later returned to Venice where she collaborated with her father, Ludovico Diaz de Santillana, at the Venini glassworks until the company was sold in 1986. In 1985, Ms. De Santillana was the recipient of Germany's Coburger Glaspreis. She has participated in numerous exhibitions in Europe, the United States, and Japan, winning widespread acclaim. Several of her works have been acquired by public and private collections, such as: Museo Vetrario di Murano, Venice; The Corning Museum of Glass, New York; Victoria and Albert Museum, London; Metropolitan Museum of Arts, New York; Carnegie Museum of Art, Pennsylvania; Seattle Art Museum, Washington; The Museum of Fine Arts Houston, Texas; Los Angeles County Museum of Art, California; The Museum of Arts and Design, New York; Musée des Arts Décoratifs, Paris.



*Portrait*, 2010 photo by Russell Johnson  
*Cristalli MoG*, 53rd Biennale di Venezia, 2009  
20" x 26" 1/2 x 17" and 30" x 15"  
photo by Fabio Zonta



# ALESSANDRO DIAZ DE SANTILLANA



Alessandro Diaz de Santillana was born in Paris and studied at the University of Venice. He joined the family firm in 1981, acted as Venini's curator of historical research for the exhibition of Venini glass at the Smithsonian Institution (1981-1983), and with his sister, subsequently took charge of research and new product development at the firm. Alessandro's work was included in the 2009 La Biennale di Venezia, and is represented in private and public collections worldwide including The Corning Museum of Glass, New York; Musée des Beaux Arts de Rouen, France; Mingei International Museum, California; and has exhibited at the Hokkaido Museum of Modern Art, Japan; museum kunst palast Düsseldorf, Germany; and Singapore Art Museum, Singapore.



Portrait, 2010 photo by Russell Johnson  
Untitled, 2005, 53rd Biennale di Venezia, 2009  
92 1/2" x 47", 24 1/4" x 5"  
photo by Fabio Zonta

L. de Santillana, *E 4*, 2010, 30 1/2" x 11"  
A. Diaz de Santillana, *E 3*, 2010, 16 3/4" x 43 5/16"





- A. Diaz de Santillana, *Earth 1*, 2010, 18 11/16" x 39"
- L. de Santillana, *Earth 2*, 2010, 23 1/2" x 12 3/4"
- L. de Santillana, *Earth 6*, 2010, 25" x 14 3/4"
- A. Diaz de Santillana, *Earth 5*, 2010, 22 11/16" x 35 5/16"



# THE STARS AND THE MOON

L. de Santillana, *Star 10*, 2011, 5" x 13 1/2"

*Hotshop*, 2010 photo by Russell Johnson

Alessandro Diaz de Santillana, *Star 5*, 19 3/4" x 29 3/4"





# THE STARS AND THE MOON

L. de Santillana, *Star*, 2011, 4 1/2" x 17 1/4"

*Hotshop*, 2010

A. Diaz de Santillana, *Nebula*, 2011, 18 1/2" x 29 1/4" x 5/8"



A. Diaz de Santillana, *Space*, 2011, 23" x 28 1/2"

*Hotshop*, 2010 photo by Russell Johnson

L. de Santillana, *Double egg*, 2011, 5 x 5 1/4" x 4 3/4"





L. de Santillana, *Space 17*, 2011, 18" x 14"  
A. Díaz de Santillana, *Space 2*, 2011, 22" x 26 1/4"



L. de Santillana, *Sun*, 2011, 17 3/4" x 9"

L. de Santillana, *Sun*, 2011, 13 1/2 x 6 3/4"

A. Diaz de Santillana, *Sun*, 2011, 21 3/8" x 29 1/4"

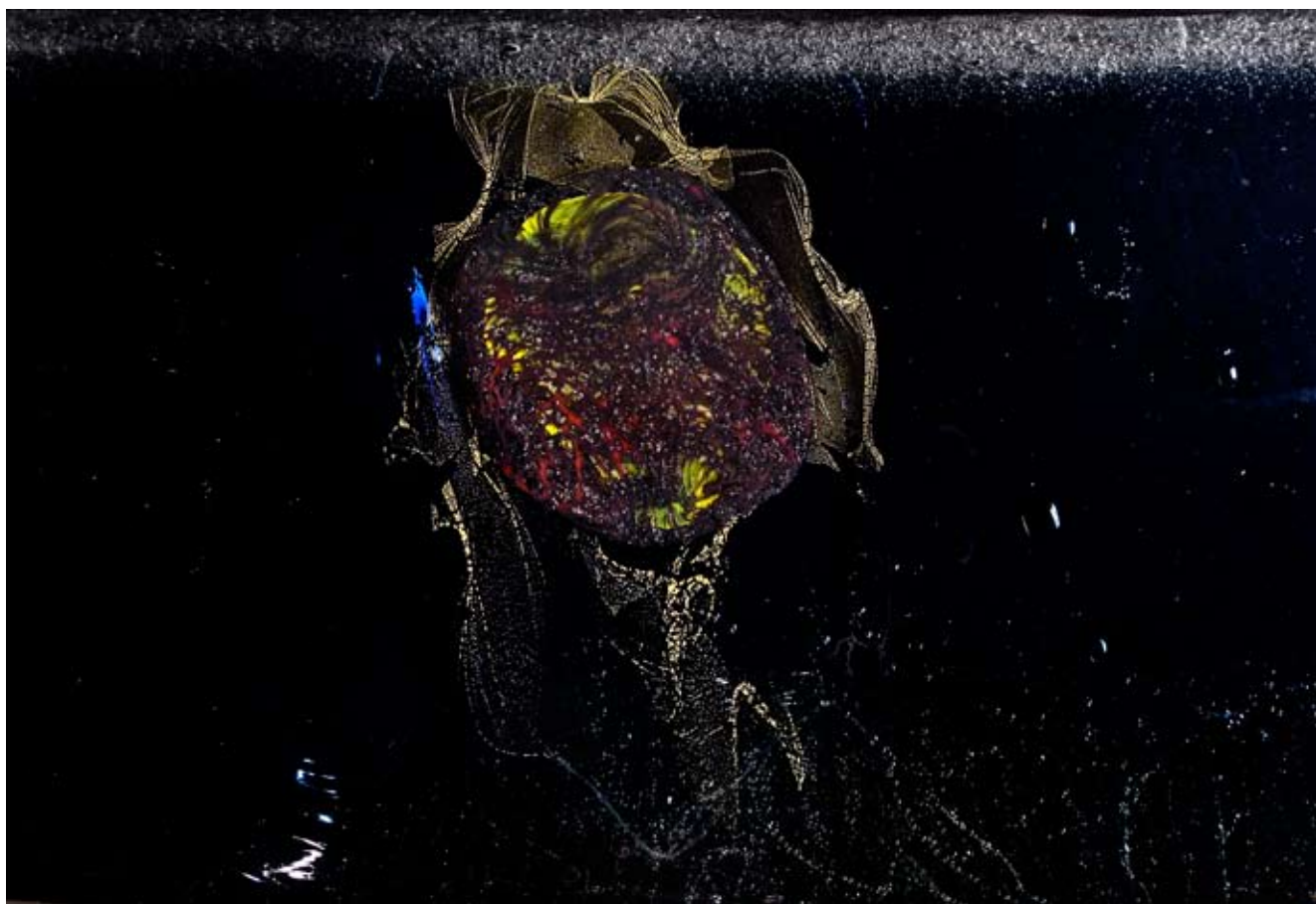




L. de Santillana, *Sun*, 2011, 7" x 3"

L. de Santillana, *Sun*, 2011

A. Diaz de Santillana, *Sun 3*, 2011, 20" x 29 1/2"





## A MESSAGE FROM THE DIRECTOR

Museum of Glass is the premier contemporary art museum dedicated to glass and is accredited by the American Association of Museums. Though a young museum, MOG has a reputation for creative energy, bold innovation and imaginative exhibitions.

Italian artists Laura de Santillana and Alessandro Diaz de Santillana created all of the components of *Scapes* at Museum of Glass during two, intense three-week residencies in the Hot Shop Amphitheater, while hundreds of visitors watched. They then spent many weeks supervising the extensive and complex cold-working necessary to meticulously finish each piece while working with Museum staff to develop a striking exhibition design. *Scapes*, the Museum's fourth traveling exhibition, is compelling in both content and beauty. A fully illustrated hardback catalog, published with the University of Washington Press, will offer insight into the impact of East Indian cosmology and philosophy on all the groundbreaking work included in the exhibition.

*Scapes* will be presented at Museum of Glass April 2012 through March 2013. An estimated 170,000 visitors will see it while on-site. An additional 200,000 will see the exhibition as it travels nationally and perhaps even internationally in 2013 and into 2014.

Two exhibitions organized by Museum of Glass have already traveled to national audiences in venues around the country – Lino Tagliapietra *In Retrospect: A Modern Renaissance in Italian Glass*, and Preston Singletary: *Echoes, Fire and Shadows*. Two more are scheduled to begin tours this year – *Kids Design Glass* and *Glimmering Gone*.

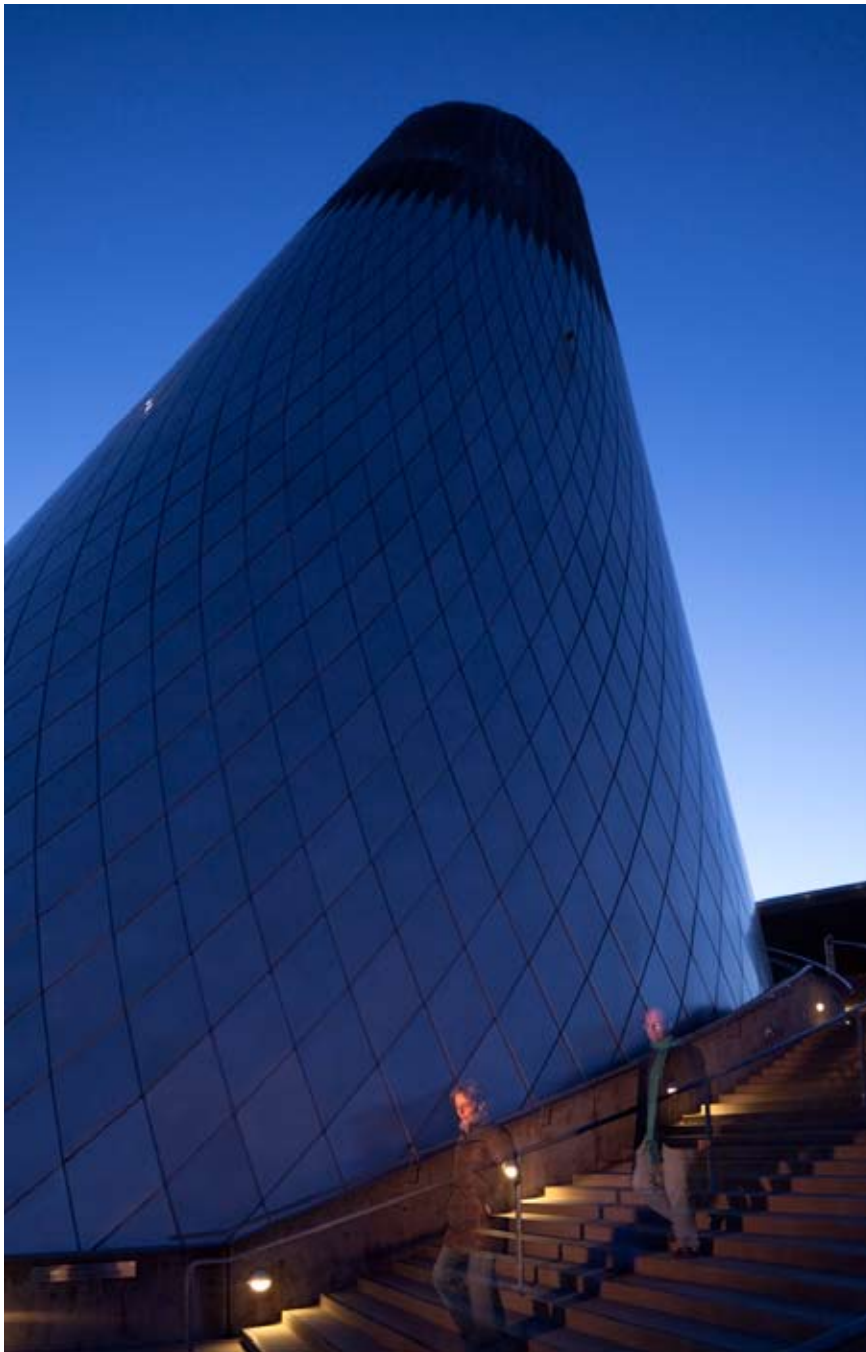
Organizing an exhibition such as *Scapes*, which involved the actual creation of the artwork itself in our Hot Shop, is an extraordinary undertaking and privilege that few museums are equipped to undertake. I invite you to support *Scapes* and to share in *Scapes* Director's Perspective introducing this thoughtfully conceptual exhibition to the world.

Sincerely,

Timothy Close  
Director/CEO



# MUSEUM OF GLASS



In 2002, Museum of Glass opened its doors to a world-class facility designed by Canadian architect Arthur Erickson. Located on the Foss Waterway, the Museum architecture has become an icon in the Pacific Northwest.

The 75,000 sq. ft. facility combines exhibition galleries, an education studio, a theater, a one-of-a-kind 500-ft. long pedestrian Chihuly Bridge of Glass and the world's largest and most active museum glass studio – the Hot Shop, which rises 90 vertical feet and is clad in stainless steel panels.

Museum of Glass provides a dynamic learning environment to appreciate the medium of glass through creative experiences, collections and exhibitions.

Museum of Glass (MOG) is the premier contemporary art museum dedicated to glass. MOG is accredited by the American Association of Museums and is a member of the Association of Art Museum Directors. Located in the epicenter of the contemporary glass movement, MOG is the only glass museum in the western United States. In nine short years, Museum of Glass has served more than 1.5 million visitors and established a national/international reputation for organizing nationally traveling exhibitions, artist residencies, and a small yet expanding permanent collection. MOG positively impacts its local, regional, national and international audiences by providing high quality artistic and educational experiences.

Photo by Chuck Lysen Photo by Chuck Lysen

# TOUR SCHEDULE

## Museum of Glass, Tacoma

April 2012 - March 2013

### Slot #1

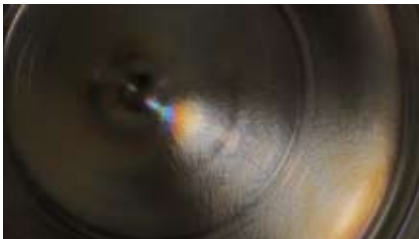
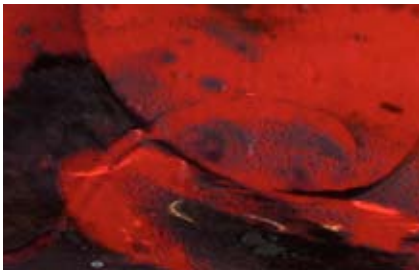
April - June 2013

### Slot #2

July - September 2013

### Slot #3

October 2013 - January 2014



Dates are approximate and will be determined when venue bookings and shipping arrangements are finalized for the tour. Tour will originate at Museum of Glass in Tacoma, Washington, and travel throughout the United States.

The exhibition requires approximately 3,000 sq. ft. of gallery space and comprises four installations or rooms, each defined by a limited, but strikingly vibrant color palette. Each room is entered through a symbolic gate and includes a combination of both artists' work.

Draft specifications for the installations are as follows:

**Earth** is composed of seven panels and six mountains, arranged in pairings.

Black, smoky gray, shades of yellow, gold and deep red define the Earth room.

**Space** is composed of seven panels, hung as a continuous line, and fourteen egg-shaped objects, grouped on a table. Space is conceptualized in varying degrees of white.

**Sun** is composed of seven panels, lingam trio, and ten cosmic eggs displayed on individual pedestals. Silver, burnt gold, white, copper, indigo and black delineate the Sun installation.

**Constellations** is composed of six panels and eight stars displayed at ground level. The Constellations are white and gold.



# TOUR SCHEDULE



Installation time will be a minimum of XXXXX weeks. Detailed building plans and specs will be available after November 2011.

Text and education materials will be included as well as a fully illustrated catalog.

The rental fee is estimated to be \$XXXXX U.S., plus pro-rated shipping to be determined as bookings and loans are finalized. In addition, venues will cover artists' fees and expenses for site-specific consultation during a minimum two-week period.

Tentative payment schedule: 1/3 at booking; 1/3 interim payment to be determined; 1/3 at opening of exhibition.

Pro-rated shipping will be billed at the time of the opening. Any adjustments or refunds will be calculated at the conclusion of the tour.

For information on bringing this exhibition to your venue, please contact Susan Warner at 253-284-2128, [swarner@museumofglass.org](mailto:swarner@museumofglass.org).

Total projected exhibition costs are \$XXXXXX



For information on sponsorship opportunities for this exhibition,  
please contact Timothy Close  
at 253-284-2123, [tclose@museumofglass.org](mailto:tclose@museumofglass.org).

1801 Dock Street, Tacoma, WA 98402 USA  
[museumofglass.org](http://museumofglass.org)